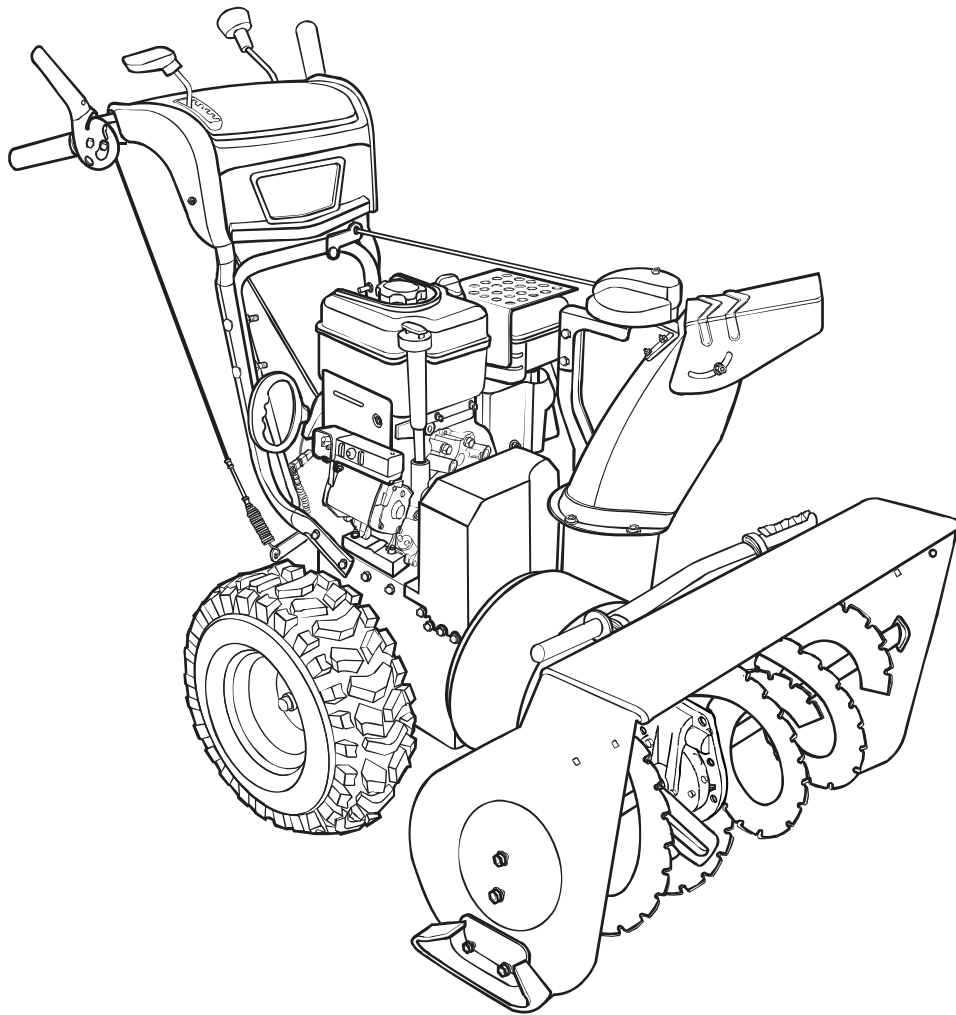


1695725

Parts Manual



Manual Part No. 1739533

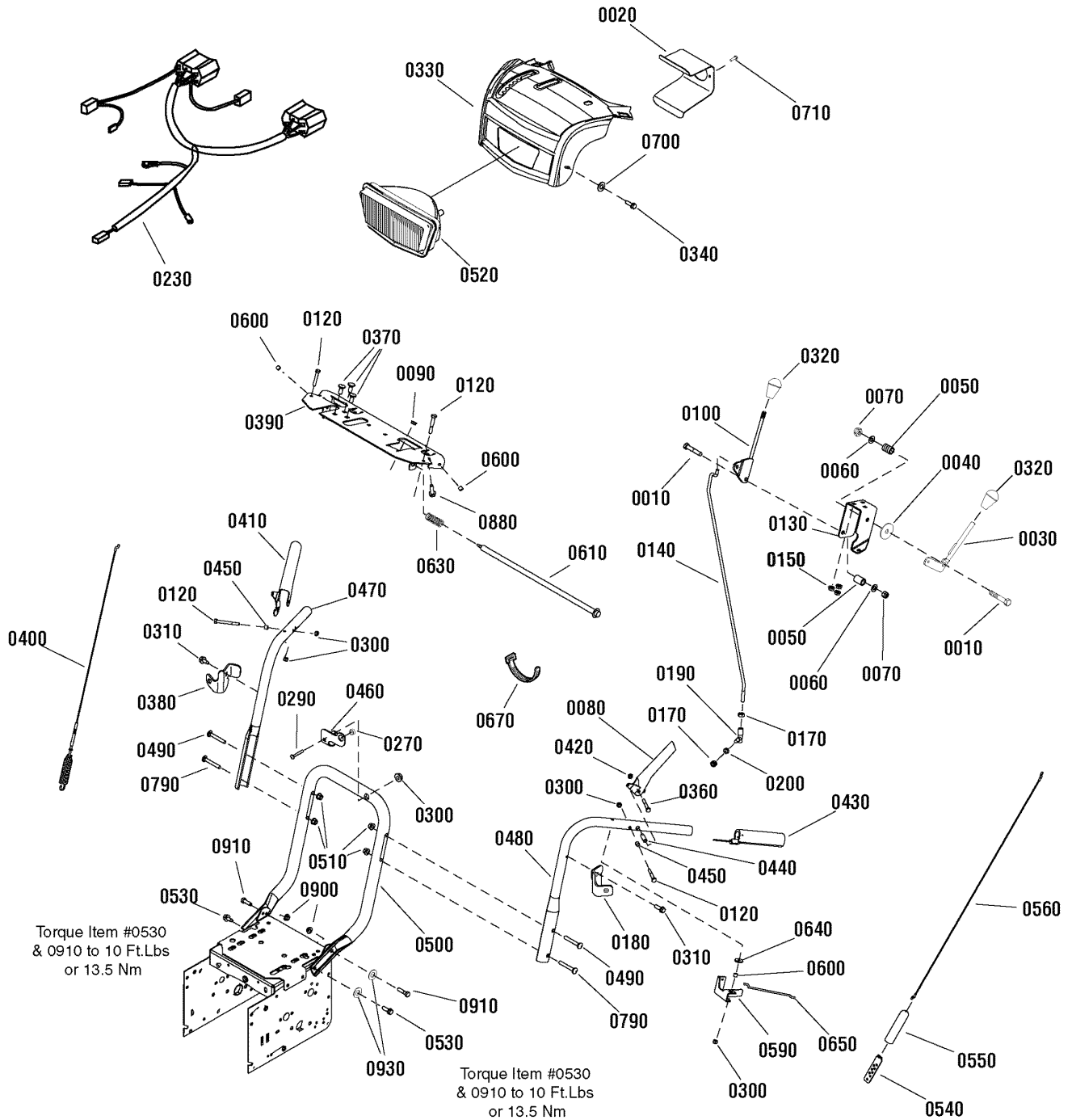
Revision A

Rev. Date: 1/14/2010

PRODUCT COMPONENTS	PAGES
Handles and Controls Group	4
Engine & Frame Group	8
Auger Drive Group	10
Auger Housing Assembly	12
Traction Drive	14
Wheels and Tires Group	16
Decals	18
Discharge Chute	20
Torque Specification Chart	Inside Back Cover

Handles and Controls Group

NOTE: Unless noted otherwise,
use the standard hardware torque
specification chart.



The above parts group applies to the following Mfg. Nos.:
1695725 - Brute 13.5 TP Snowthrower (2009)

Handles and Controls Group

REF NO	PART NO.	QTY.	DESCRIPTION
0010	1923701SM	1	CAPSCREW, Hex Head, 3/8-16 x 2
0020	1736305AYP	1	BRACKET, Light Mount
0030	1736192YP	1	LEVER, Deflector Control
0040	1924356SM	1	WASHER, 3/8
0050	50786MA	2	SPRING, 3/4
0060	1918266SM	2	WASHER, 3/8
0070	1919439SM	2	NUT, Hex Lock, Esna Light, 3/8-16
0080	1737690YP	1	LEVER, Clutch, Left
0090	1667588SM	1	BUSHING
0100	1733614SM	1	ROD & BRACKET ASSEMBLY, Speed
0120	1921962SM	4	CAPSCREW, Hex Head, 1/4-20 x 1-3/4
0130	1737684YP	1	BRACKET, Controls
0140	1734354SM	1	ROD, 25 Inch
0150	1931277SM	3	NUT, Hex Flange, Whiz Lock, 5/16-18
0170	2820263SM	2	NUT, Hex, 5/16-24
0180	1736147YP	1	BRACKET, Mounting, Panel, Left
0190	50782MA	1	BALLJOINT, Steel
0200	1917356SM	1	LOCKWASHER, Spring, 5/16
0230	1738286YP	1	WIRE HARNESS, Headlights
0270	1501874MA	1	BUSHING, Chute Crank
0290	1931323SM	1	BOLT, Carriage, 1/4-20 x 2 (Grade 5)
0300	1920397SM	6	NUT, Hex Lock, Esna Light, 1/4-20
0310	1927429SM	2	SCREW, Hex Washer Head, Taptite, 1/4-20 x 5/8
0320	1732470SM	2	KNOB, Internal Thread, 3/8-16
0330	1736345YP	1	COVER ASSEMBLY, Panel
0340	1960556SM	2	SCREW, Pan Head, Torx, 1/4-20 x 3/4
0360	1922837SM	2	CAPSCREW, Hex Head, 1/4-20 x 1-1/2 (Grade 5)
0370	340720MA	3	BOLT, Carriage, 5/16-18 x 3/4
0380	1736354YP	1	BRACKET, Mounting, Panel, Right
0390	1737685AYP	1	SUPPORT, Dash Panel
0400	1732471SM	1	ASSEMBLY, Cable and Spring, Auger Drive, Right
0410	1736323YP	1	LEVER, Clutch, Right
0420	1923358SM	2	NUT, Hex Centerlock, 1/4-20
0430	1726317SM	2	GRIP
0440	1736542YP	2	SPACER, Stepped
0450	1678392SM	2	SPACER
0460	1735589YP	1	BRACKET, Rod Support
0470	1734587ASM	1	HANDLE, Upper, Right
0480	1734586ASM	1	HANDLE, Upper, Left
0490	1960273SM	2	BOLT, Carriage, 5/16-18 x 2-1/2 (Grade 5)
0500	1737759AYP	1	HANDLE, Lower
0510	1960686SM	4	NUT, Hex Flange, Esna, 5/16-18
0520	1736208YP	1	HEAD LIGHT ASSEMBLY

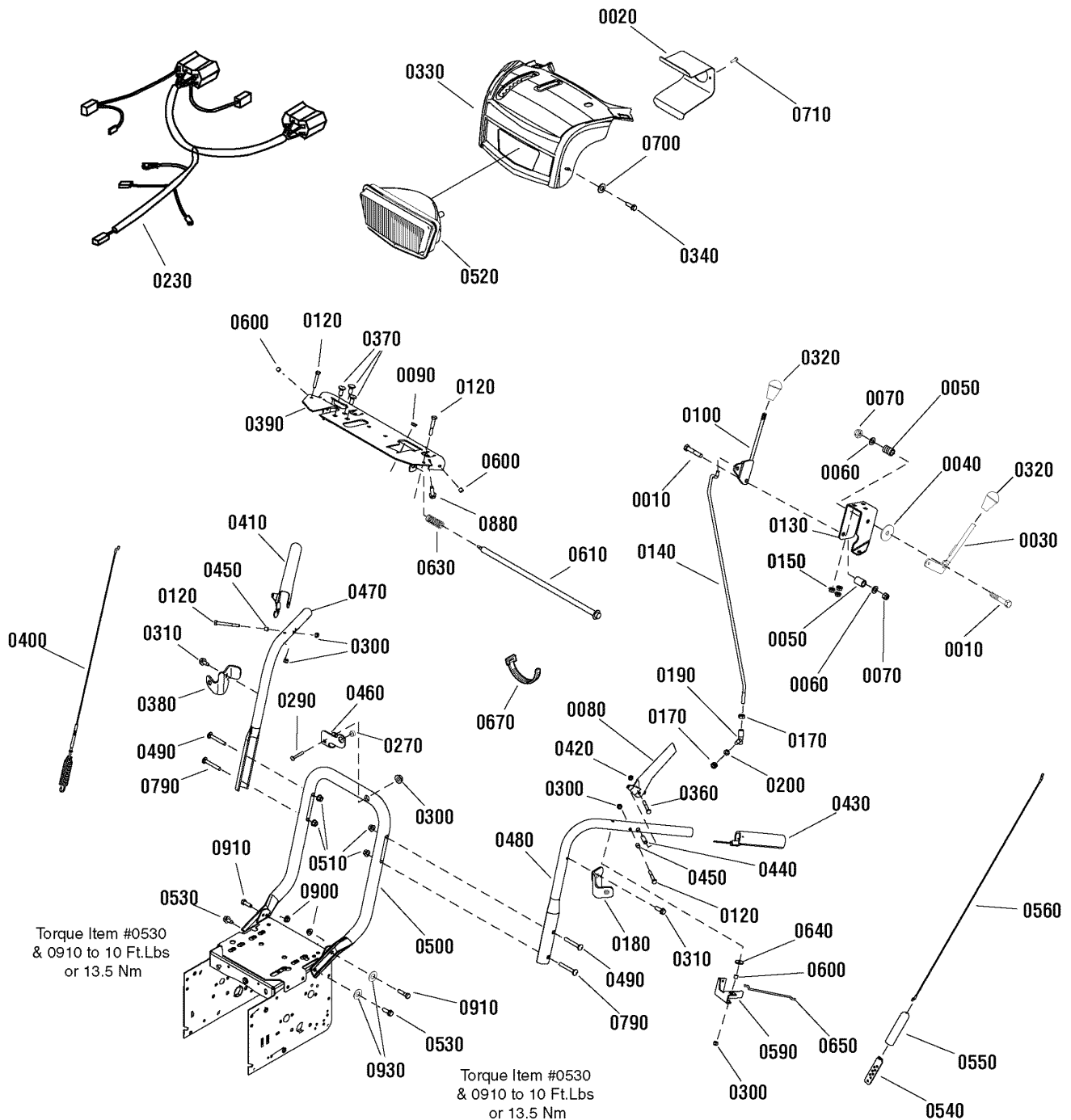
Footnotes

The above parts group applies to the following Mfg. Nos.:

1695725 - Brute 13.5 TP Snowthrower (2009)

Handles and Controls Group

NOTE: Unless noted otherwise,
use the standard hardware torque
specification chart.



The above parts group applies to the following Mfg. Nos.:

1695725 - Brute 13.5 TP Snowthrower (2009)

Handles and Controls Group

REF NO	PART NO.	QTY.	DESCRIPTION
0530	1664847SM	2	SCREW, Hex Washer Head, Taptite, 5/16-18 x 3/4
0540	313441MA	1	BRACKET, Cable Adjusting
0550	308146MA	1	BOOT, Spring End Cover, 4 Inch
0560	1502113MA	1	CABLE, Front Drive
0590	1733505ASM	1	BRACKET, Free Hand Control
0600	1733095SM	3	SPACER, 1/4ID x 3/8OD x 1/8
0610	1733509SM	1	ROD AND SPRING ASSEMBLY
0630	2108360SM	1	SPRING, Compression
0640	1960353SM	1	WASHER, 1/4
0650	1736360YP	1	ROD, HOLDDOWN
0670	1701011SM	5	TIE, Self Locking
0680	1733192SM	1	KNOB, Slot Speed
0700	1921319SM	2	WASHER, 1/4
0710	316042MA	2	SCREW, Hex Washer Head, #10 x 5/8
0750	1960589SM	1	SCREW, Phillips, #10-24 x 3/4
0760	1933896SM	1	NUT, Hex Lock, 10-24
0790	1931338SM	2	BOLT, Carriage, 5/16-18 x 1-3/4 (Grade 5)
0880	7091081SM	2	SCREW, Self Tap, 1/4-15 x 3/4
0900	1935048SM	2	NUT, Hex Flange, Two Way Lock, 5/16-18
0910	1921333SM	2	CAPSCREW, Hex Head, 5/16-18 x 1 (Grade 5)
0930	71071MA	2	WASHER, Flat

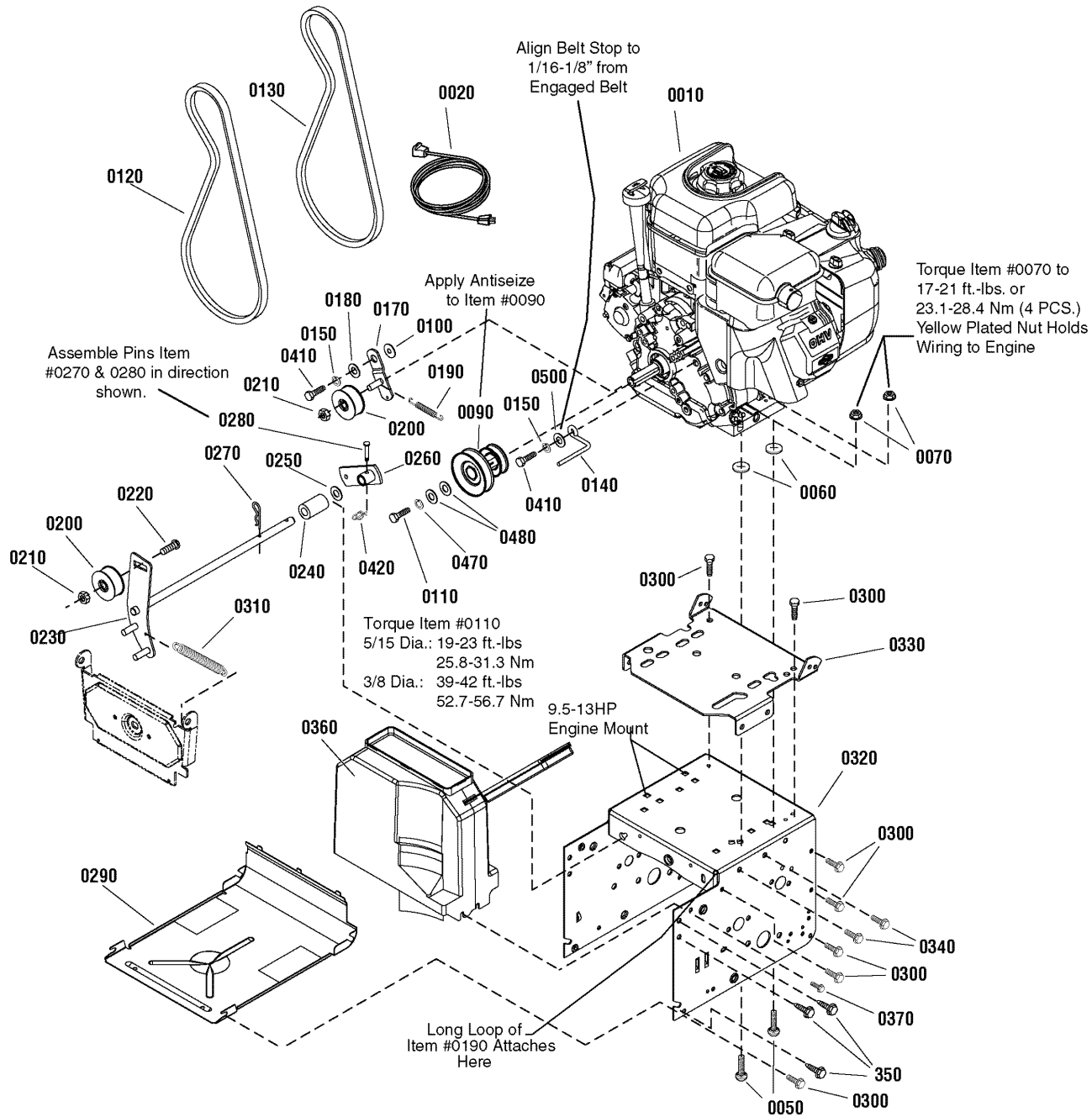
Footnotes

The above parts group applies to the following Mfg. Nos.:

1695725 - Brute 13.5 TP Snowthrower (2009)

Engine & Frame Group

NOTE: Unless noted otherwise, use the standard hardware torque specification chart.



The above parts group applies to the following Mfg. Nos.:

1695725 - Brute 13.5 TP Snowthrower (2009)

Engine & Frame Group

REF NO	PART NO.	QTY.	DESCRIPTION
0010	20M114-0138-E1	1	* ENGINE, 9T 110V 60W
0020	6219MA	1	CORD, 10FT
0050	002X97MA	4	BOLT, Carriage, 5/16-18 x 1-1/2
0060	028X76MA	4	NUT, Push, 1/4 Dia.
0070	2831277SM	1	NUT, Hex Flange, 5/16-18 Whiz-Lock, SM YEL
0090	1501109MA	1	PULLEY, Engine
0100	1919381SM	1	WASHER, 5/16
0110	1960428SM	1	CAPSCREW, Hex Head, 3/8-24 x 1-1/4 G8
0120	1733324SM	1	V-BELT, 3L, 33.13
0130	585416MA	1	BELT, AUGER V 4L
0140	1733014SM	1	STOP, Belt, 3
0150	1917356SM	2	LOCKWASHER, Spring, 5/16
0160	1921515SM	3	CAPSCREW, Hex-Head, 5/16-24X0.750 G5
0170	1501112YZMA	1	BRACKET, Idler
0180	1501065MA	1	BUSHING, Idler Bracket
0190	53704MA	1	SPRING, External Idler
0200	1502120MA	2	IDLER, Plastic Ball Bearing
0210	1960251SM	2	NUT, Hex, Centerlock, 3/8-16
0220	585781MA	1	BOLT, Carriage, 3/8-16 x 1-1/4 G5
0230	1501226YZMA	1	ASSEMBLY, Auger Idler
0240	1502041MA	1	SPACER, Auger BRACKET GRAY PLASTIC 1.61L
0250	1960027SM	1	WASHER, 1/2
0260	1733451SM	1	ARM-CONTROL 2008 WB SNOW P'MTL YEL
0270	711682MA	1	PIN, Hair 3/8 x 1-5/8
0280	1736381YP	1	PIN, CLEVIS
0290	1740906ASM	1	PANEL, Bottom
0300	1927429SM	12	SCREW, Hex-Washer head, Taptite, 1/4-20 X 5/8
0310	165X159MA	1	SPRING, External, Auger, Idler
0320	1740571ZMA	1	FRAME BOX
0330	1733583ZYP	1	PLATE, Engine Mount
0340	1924856SM	4	SCREW, Hex-Washer head, Taptite, 5/16-18 x 1/2
0350	1664847SM	6	SCREW, Hex-Washer head, Taptite, 5/16-18 x 3/4
0360	1502169MA	1	COVER, BELT
0370	26X306MA	2	SCREW, Self-Tapping, 1/4 x 3/4
0410	910828MA	1	BOLT, Hex, 5/16-24 x 1.00 YZ
0420	7023590SM	1	PIN, Cotter, Self Locking, 1/4"
0470	1916965SM	1	LOCKWASHER, Spring 3/8
0480	1922755SM	2	WASHER, Flat, 3/8
0500	7091528SM	1	WASHER, .375 x .875 x .083 Flat

Footnotes

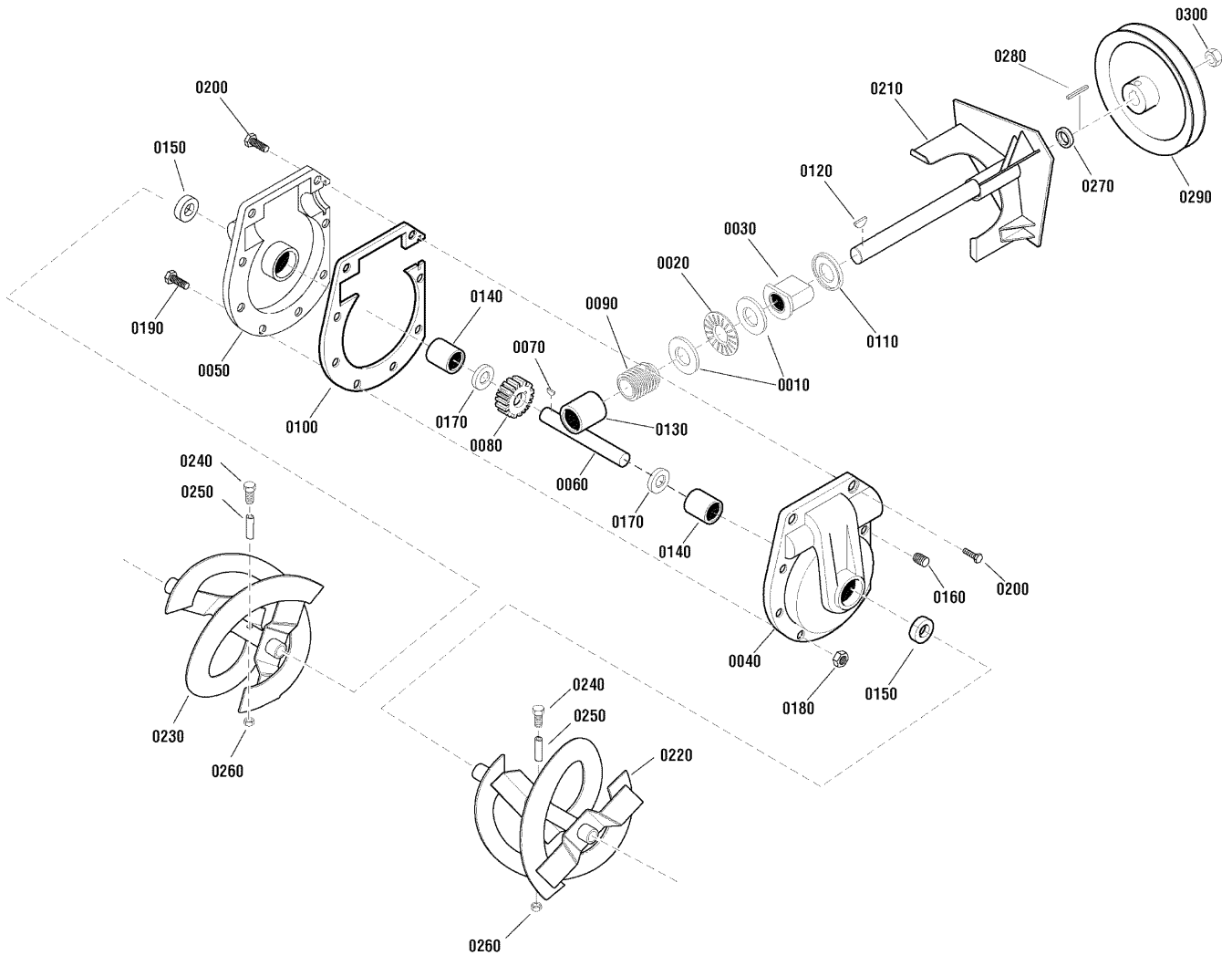
Note* See your local Briggs & Stratton distributor for parts and service.

The above parts group applies to the following Mfg. Nos.:

1695725 - Brute 13.5 TP Snowthrower (2009)

Auger Drive Group

NOTE: Unless noted otherwise,
use the standard hardware torque
specification chart.



The above parts group applies to the following Mfg. Nos.:

1695725 - Brute 13.5 TP Snowthrower (2009)

Auger Drive Group

REF NO	PART NO.	QTY.	DESCRIPTION
0010	48275MA	2	WASHER, FLAT
0020	50684MA	1	BEARING, Roll, 3/4ID x 1-1/4OD
0030	583126MA	1	BEARING, FLANGE
0040	895MA	1	CASE, GEAR, LH
0050	896MA	1	CASE, GEAR, RH
0060	760528MA	1	SHAFT, AUGER OUTPUT
0070	73905MA	1	KEY, WOODRUFF #91
0080	53730MA	1	WORM GEAR
0090	53732MA	1	WORMGEAR, 1-3/4OD x 1-9/16
0100	897MA	1	GASKET, GEAR BOX
0110	53737MA	1	RING, QUAD 0.924 ID
0120	50795MA	1	KEY
0130	53731MA	1	BEARING, SLEEVE
0140	53743MA	2	BEARING, SLEEVE
0150	780151MA	2	SEAL, OIL
0160	53749MA	1	PLUG, PIPE 0.25-18
0170	53748MA	2	WASHER, FLAT
0180	71100MA	8	NUT, 5/16-24
0190	910828MA	7	SCREW, 5/16-24 x 1.00
0200	330434MA	1	SCREW, 5/16-24 x 1.50
0210	1740584AYP	1	WELD, IMPELLER
0220	1738031BCYP	1	AUGER, ASSEMBLY, LH
0230	1738032BCYP	1	AUGER, ASSEMBLY, RH
0240	9524MA	2	SCREW, 1/4-20 X 1.75
0250	3943MA	2	SPACER, SLEEVE
0260	73826MA	2	NUT, Hex 1/4-20
0270	1501158MA	1	SPACER, Friction Pulley
0280	2001022MA	1	KEY, SQUARE 3/16 X 3/4
0290	1737261YP	1	PULLEY ASSEMBLY
0300	15X112MA	1	NUT, .50-20 HEX FLANGE

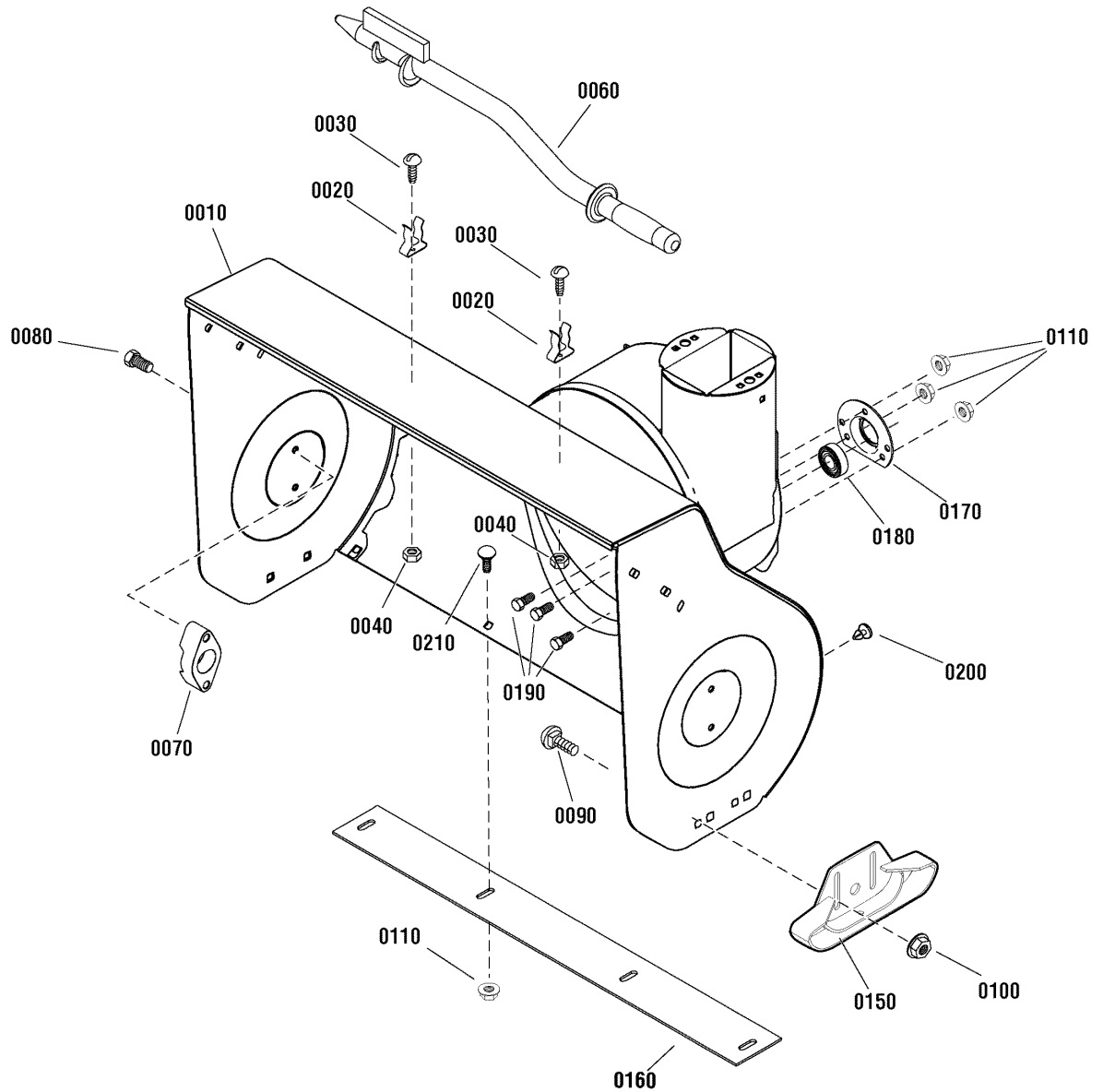
Footnotes

The above parts group applies to the following Mfg. Nos.:

1695725 - Brute 13.5 TP Snowthrower (2009)

Auger Housing Assembly

NOTE: Unless noted otherwise,
use the standard hardware torque
specification chart.



The above parts group applies to the following Mfg. Nos.:

1695725 - Brute 13.5 TP Snowthrower (2009)

Auger Housing Assembly

REF NO	PART NO.	QTY.	DESCRIPTION
0010	1737925ZYP	1	HOUSING, ASSEMBLY
0020	1736620YP	2	CLAMP, SPRING
0030	1960569SM	2	SCREW, Truss Head Torx, #10-24 x 3/8
0040	15X146MA	2	NUT, Nylock, 10 x 24
0060	1736094YP	1	BRUSH, CLEANOUT
0070	53757MA	2	BEARING, FLANGE
0080	1664847SM	4	SCREW, Hex-Washer head, Taptite, 5/16-18 x 3/4
0090	340720MA	4	BOLT, 5/16-18 X .75
0100	7091619SM	4	NUT, Hex Flange, 3/8-16
0110	710026MA	7	NUT, Hex Flange Serrated Lock, 5/16-18
0150	1737985AYP	2	SKID, Height Adjust
0160	1740746AYP	1	BLADE, SCRAPER
0170	582957YZMA	1	RETAINER, Ball Bearing
0180	1705897SM	1	BEARING, Ball, 11/16 x 1-9/16 x 15/32
0190	001X45MA	3	BOLT, Hex, 5/16-18 x 5/8
0200	760040MA	2	PLUG, PANEL
0210	7090799SM	4	BOLT, Carriage, 5/16-18 x 5/8

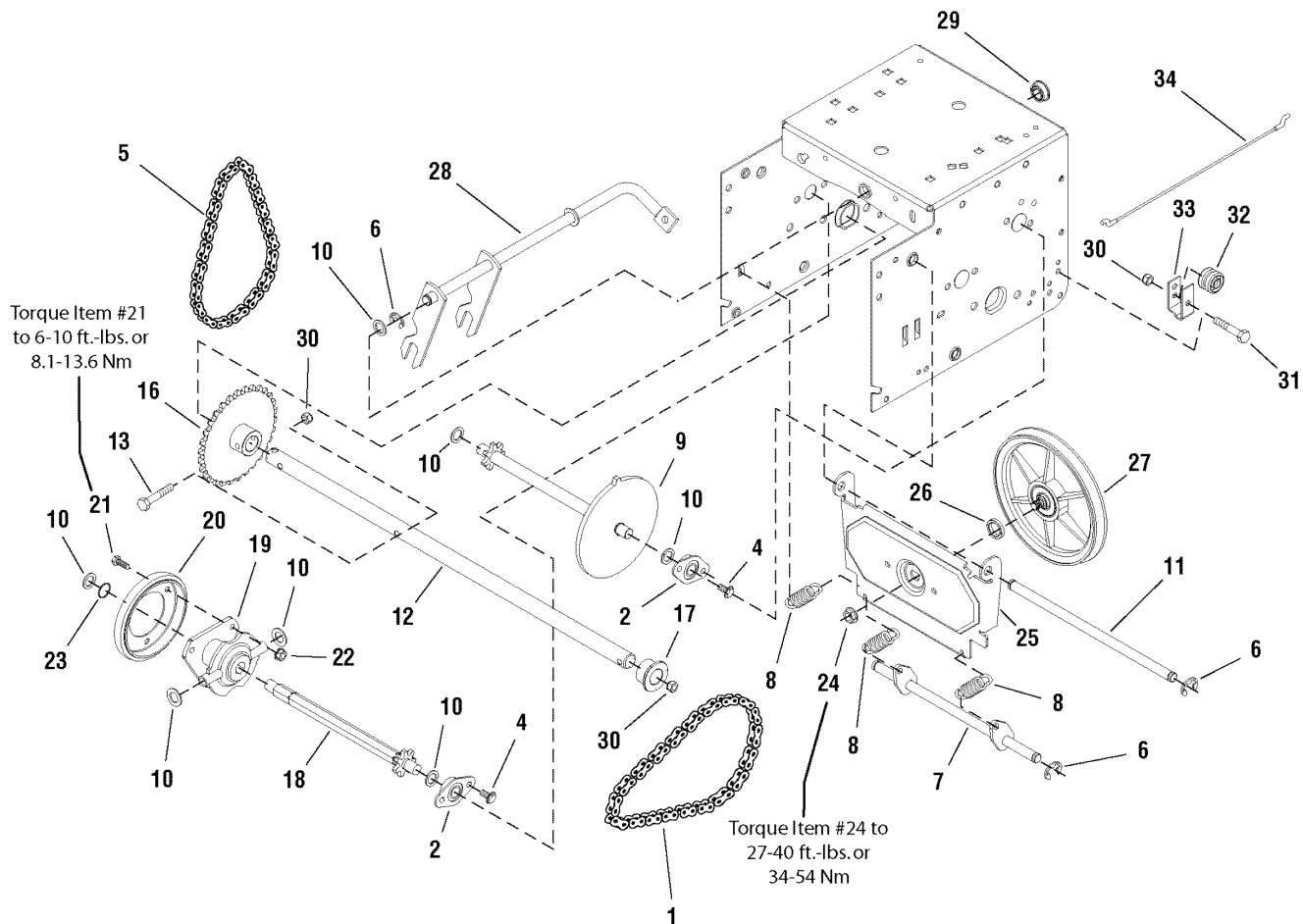
Footnotes

The above parts group applies to the following Mfg. Nos.:

1695725 - Brute 13.5 TP Snowthrower (2009)

Traction Drive

NOTE: Unless noted otherwise, use the standard hardware torque specification chart.



The above parts group applies to the following Mfg. Nos.:

1695725 - Brute 13.5 TP Snowthrower (2009)

Traction Drive

REF NO	PART NO.	QTY.	DESCRIPTION
1	579851MA	1	CHAIN, Roller
2	334163MA	4	RETAINER & BUSHING ASSEMBLY
4	1924856SM	8	SCREW, Hex Washer Head Taptite, 5/16-18 x 1/2
5	579868MA	1	CHAIN, Roller
6	11X30MA	5	RETAINER, Ring 7/16
7	1502105YZMA	1	SPRING LINK ASSEMBLY
8	1736469YP	3	SPRING, Extension
9	1501090MA	1	SPROCKET, Set
10	1960027SM	7	WASHER, 1/2
11	1501092YZMA	1	AXLE, Swing Plate
12	1501563MA	1	AXLE, Bushing
13	01X193MA	1	BOLT, Hex 1/4-20 x 1-3/4 G8
16	1501089MA	1	SPROCKET, Axle
17	1501114MA	2	BEARING, Axle D-Hole
18	1501100MA	1	HEX SHAFT & SPROCKET ASSEMBLY
19	337029MA	1	HUB, Friction Wheel & Bearing
20	1501435MA	1	WHEEL, Friction
21	1921959SM	3	CAPSCREW, Hex Head 1/4-20 x 5/8 G5
22	1928372SM	3	NUT, Hex KEPS 1/4-20
23	1733326SM	1	RING, Retaining Extension
24	15X114MA	1	NUT, 3/8-24 Flange Lock
25	1501057YZMA	1	PLATE, Swinging
26	1501158MA	1	SPACER, Friction Pulley
27	1501115MA	1	FRICTION PULLEY ASSEMBLY
28	1501110YZMA	1	SPEED SELECT ASSEMBLY
29	579944MA	1	BEARING, Flange
30	1920397SM	2	NUT, Hex Lock ESNA Light 1/4-20
31	1922837SM	1	CAPSCREW, Hex Head, 1/4-20 x 1-1/2 G5
32	579860MA	1	SPOOL CABLE, Auger Control
33	1501059YZMA	1	BRACKET, Cable Spool
34	1501122MA	1	CABLE, Front Drive Lower All

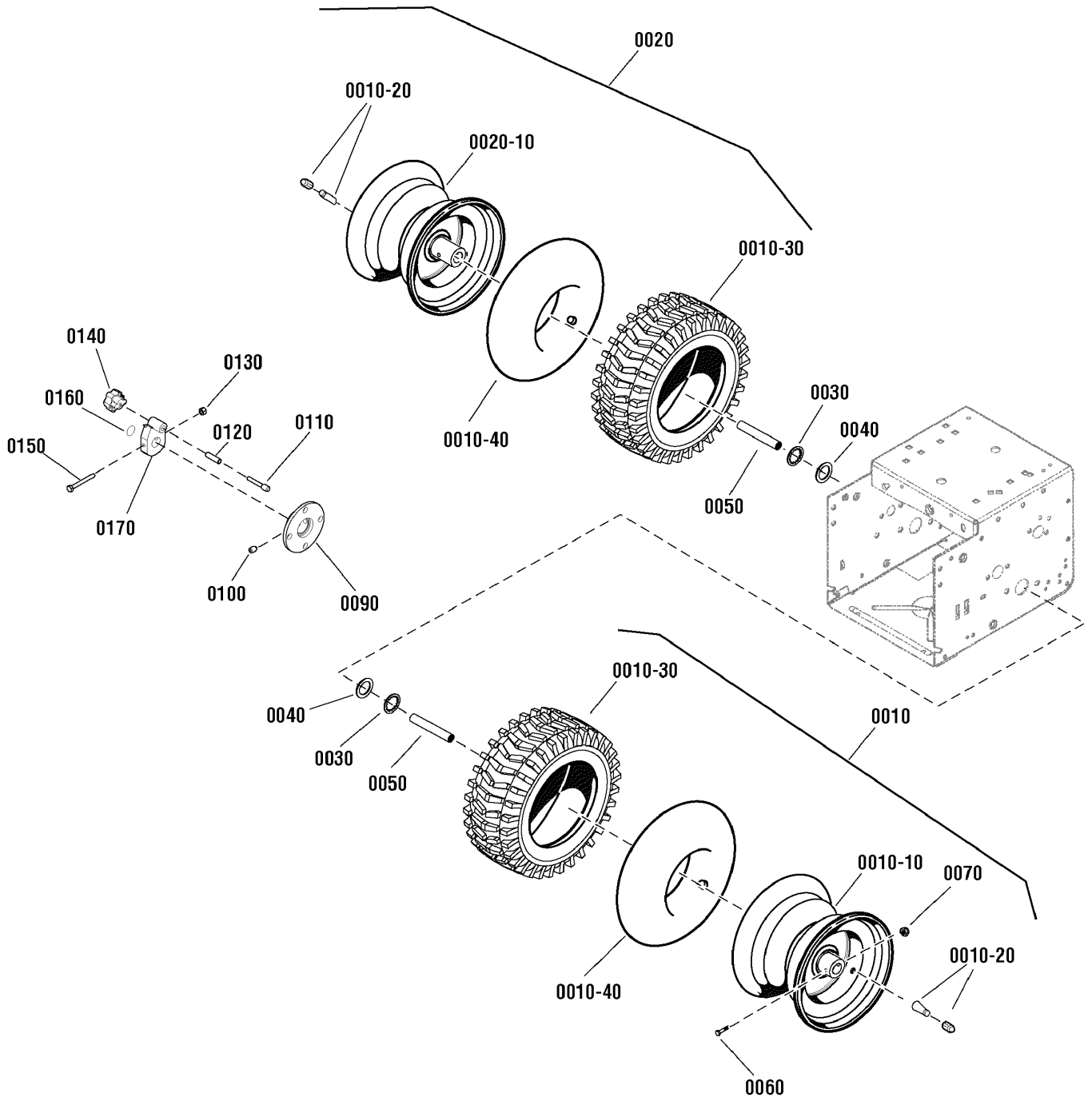
Footnotes

The above parts group applies to the following Mfg. Nos.:

1695725 - Brute 13.5 TP Snowthrower (2009)

Wheels and Tires Group

NOTE: Unless noted otherwise,
use the standard hardware torque
specification chart.



The above parts group applies to the following Mfg. Nos.:

1695725 - Brute 13.5 TP Snowthrower (2009)

Wheels and Tires Group

REF NO	PART NO.	QTY.	DESCRIPTION
0010	1736622YP	1	WHEEL ASSEMBLY, Left
0010-10	-----	1	*RIM, 16 X 6.5-8, L.H.
0010-20	2172353SM	1	VALVE STEM & CAP
0010-30	1727075SM	1	TIRE, X-TRAC TL, 16 x 6.50 - 8
0010-40	2164247SM	1	TUBE, Tire
0020	1736621YP	1	WHEEL ASSEMBLY, Right
0020-10	-----	1	*RIM, 16 X 6.5-8, R.H.
0010-20	2172353SM	1	VALVE STEM & CAP
0010-30	1727075SM	1	TIRE, X-TRAC TL, 16 x 6.50 - 8
0010-40	2164247SM	1	TUBE, Tire
0030	1657528SM	2	RING, Retaining
0040	712120MA	2	WASHER, Flat, 3/4
0050	1501138MA	2	BUSHING, Wheel
0060	577015MA	1	SCREW, 1/4-20 x 1-3/4
0070	15X145MA	1	NUT, 1/4-20 HEX NYLOCK
0090	1501032EMA	1	DISC, Wheel Lock
0100	2001066MA	2	SCREW, Hex, 3/8-16 x 1/2
0110	1501856YZMA	1	PIN, Wheel Lock
0120	164X34MA	1	SPRING, Compression
0130	1501857MA	1	HUB, Wheel Lock
0140	1501855MA	1	KNOB, Wheel Lock
0150	73839MA	1	SCREW, Hex Head, 1/4-20 x 2-1/4 G8
0160	48X5600MA	1	DECAL, Wheel Lock
0170	1920397SM	1	NUT, Hex Lock, Esna Light, 1/4-20

Footnotes

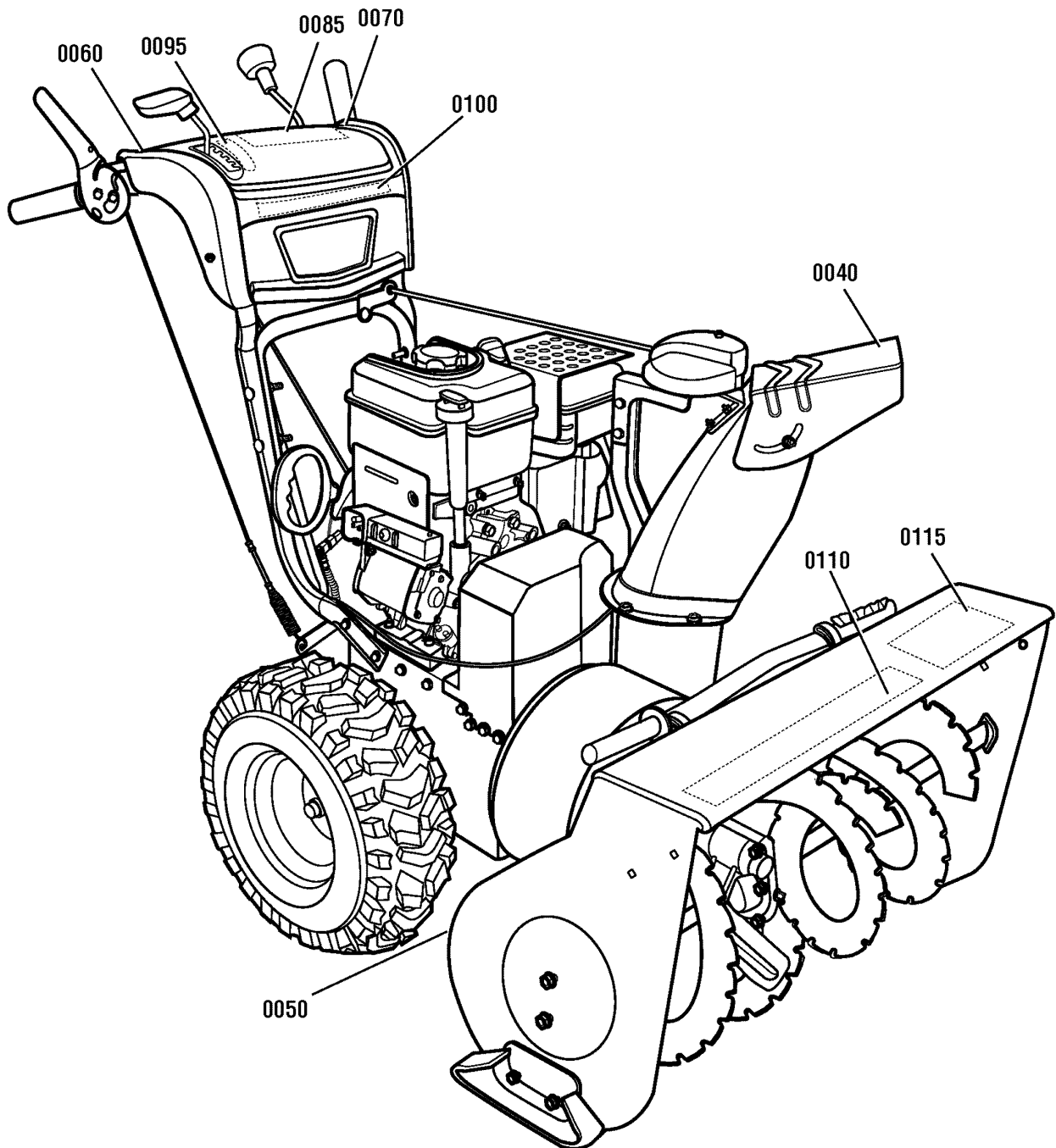
*Not a servicable part. Order Complete Wheel & Tire Assembly

The above parts group applies to the following Mfg. Nos.:

1695725 - Brute 13.5 TP Snowthrower (2009)

Decals

NOTE: Unless noted otherwise,
use the standard hardware torque
specification chart.



The above parts group applies to the following Mfg. Nos.:
1695725 - Brute 13.5 TP Snowthrower (2009)

Decals

REF NO	PART NO.	QTY.	DESCRIPTION
0040	1737865YP	1	DECAL, DANGER CHUTE
0050	1737866YP	1	DECAL, ISO AUGER FR/EN
0060	1737869YP	1	DECAL, AUGER CLUTCH
0070	1737870YP	1	DECAL, DRIVE CLUTCH
0085	1737874YP	1	DECAL, CONTROLS
0095	1736616YP	1	DECAL, SHIFT
0100	1736649YP	1	DECAL, BRUTE DASH
0110	1736650YP	1	DECAL, BRUTE AUGER
0115	1736686YP	1	DECAL, BRUTE AUGER HOUSING 29"

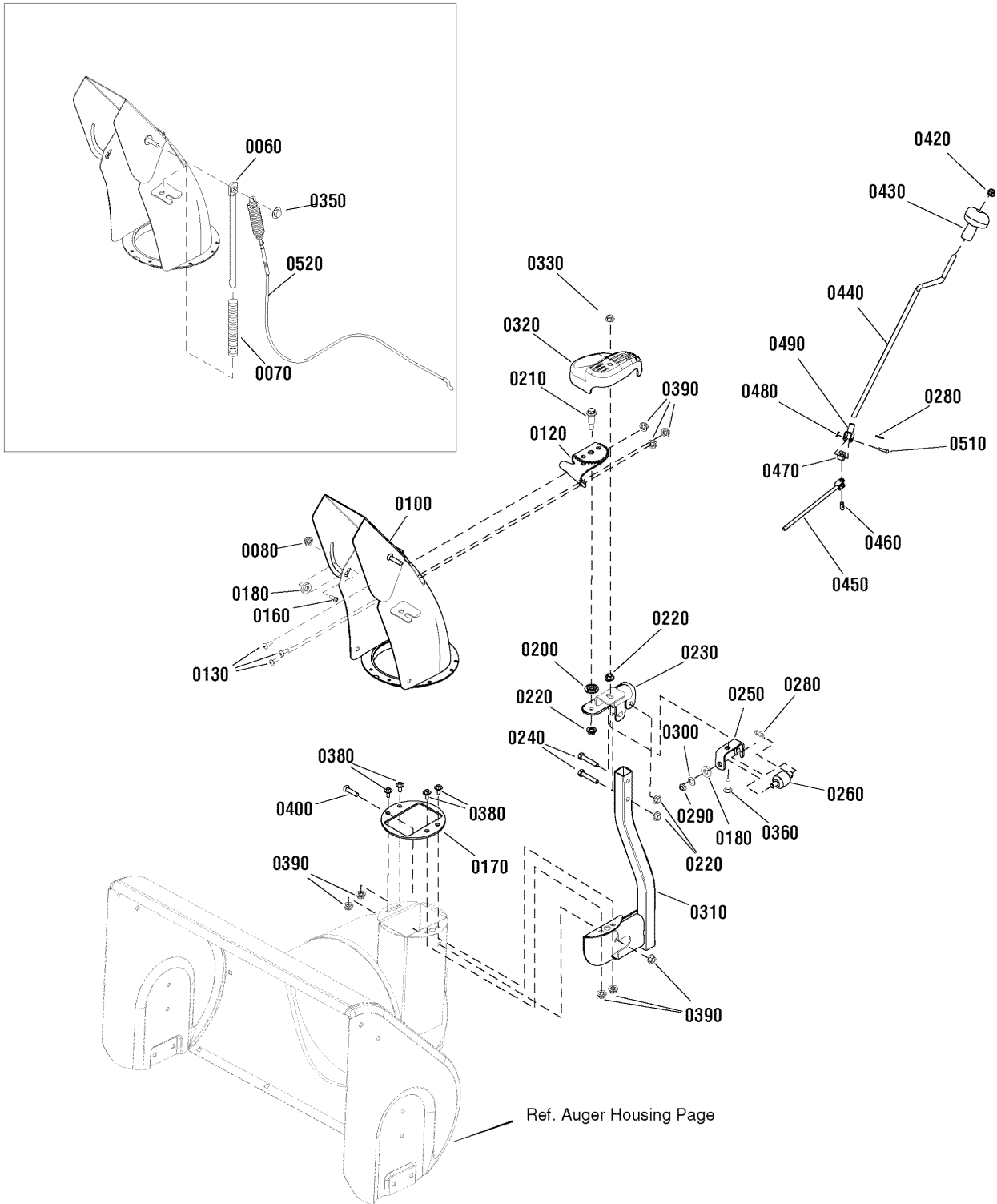
Footnotes

The above parts group applies to the following Mfg. Nos.:

1695725 - Brute 13.5 TP Snowthrower (2009)

Discharge Chute

NOTE: Unless noted otherwise, use the standard hardware torque specification chart.



The above parts group applies to the following Mfg. Nos.:

1695725 - Brute 13.5 TP Snowthrower (2009)

Discharge Chute

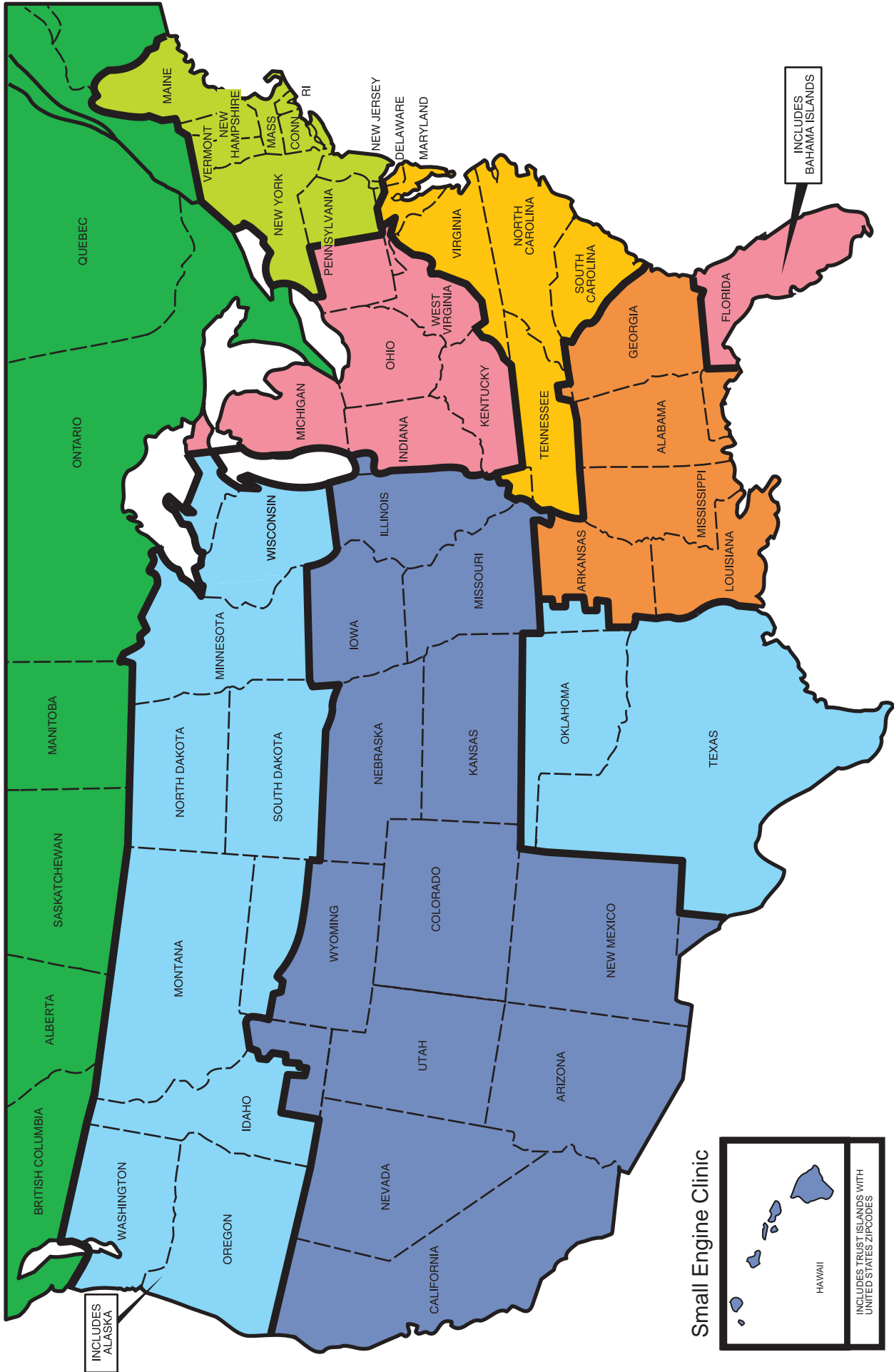
REF NO	PART NO.	QTY.	DESCRIPTION
0060	1734708ASM	1	ROD, Spring
0070	1734647SM	1	SPRING, Compression
0080	1739305YP	1	NUT, Hex Flange ESNA, 5/16-18
0100	1735761AYP	1	DISCHARGE CHUTE ASSEMBLY
0120	1736038YP	1	GEAR & SUPPORT ASSEMBLY, Chute
0130	1960715SM	5	SCREW, Truss Head, 1/4-20 x 3/4
0160	7091508SM	1	BOLT, Carriage, 5/16-18 x 3/4 GR5
0170	1735767YP	1	GUIDE, CHUTE RING
0180	2860210SM	2	WASHER, Nylon, .388 x 1.12 x .030
0200	1733026SM	1	WASHER, Powdered Metal
0210	1732412SM	1	BOLT, Shoulder 5/16-18 G5
0220	1960684SM	4	NUT, Hex KEPS 5/16-18 Conical Washer
0230	1734423ASM	1	SUPPORT, Gear & Chute 10GA
0240	1922127SM	2	CAPSCREW, Hex Head 5/16-18 x 1-3/4 G5
0250	1738020YP	1	SUPPORT, Worm "U" 10GA
0260	1734439SM	1	WORM, Chute L.H.
0280	1501293MA	1	PIN, Hair Chute Gear
0280	1501293MA	2	PIN, HAIR
0290	1960762SM	1	NUT, Hex Lock Jam ESNA Lite 3/8-24
0300	1734542SM	1	WASHER, Cup
0310	1736195AYP	1	CHUTE SUPPORT ASSEMBLY
0320	1734442SM	1	COVER, Gears
0330	1935048SM	1	NUT, Hex Flange 5/16-18 Two Way Lock
0350	1932718SM	1	NUT, Push for .312 DIA Stud Capped .625OD
0360	1931335SM	1	CARRIAGE BOLT, 5/16-18 x 1 G5
0380	691005	4	CAPSCREW, Hex-Flange, 1/4-20 x .687
0390	5025391SM	8	NUT, 1/4-20 HEX NYLOCK FLANGE
0400	02X101MA	2	BOLT, CARRIAGE 0.25-20 x 0.75
0420	1960093SM	1	NUT, Push Pal 5/16 Diameter Stud Capped
0430	1714084SM	1	KNOB, SPINNER
0440	1735661YP	1	CRANK ROD
0450	1735660YP	1	CHUTE, CRANK
0460	578060MA	1	PIN, UNIVERSAL JOINT
0470	578063MA	1	HOUSING, UNIVERSAL
0480	579493MA	1	PIN, COTTER
0490	1733611SM	1	YOKE ADAPTER ASSEMBLY
0510	578309MA	2	PIN, CLEVIS
0520	1732971SM	1	CABLE & SPRING ASSEMBLY
0520	1935048SM	2	NUT, Hex Flange Two-Way Lock, 5/16-18

Footnotes

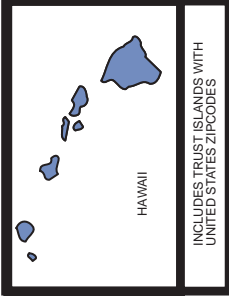
The above parts group applies to the following Mfg. Nos.:

1695725 - Brute 13.5 TP Snowthrower (2009)

IDN Network



Small Engine Clinic



- Magneto Power (800) 733-7388
- MWE (800) 683-8484
- Preferred Power (800) 331-7164
- SEDCO (800) 346-4260
- Atlantic Power (800) 456-5692
- Central Power (800) 444-7774
- Power Source Canada (905) 829-0006

Briggs & Stratton Corporation
INTEGRATED DISTRIBUTOR NETWORK

Midwest Engines	700 Enterprise Rd Aurora, IL 60504	www.mwe.net	(800) 683-8484
Central Power Systems	3700 Paragon Dr Columbus, OH 43228	www.centralpower.com	(800) 444-7774
Atlantic Power	20 Empire Stat Rd Castleton, NY 12033	www.atlanticpowerinc.com	(800) 456-5692
Preferred Power Inc	6509-A Northpark Blvd Charlotte, NC 28216	www.centralpower.com	(800) 331-7164
Central Power Systems	3700 Paragon Dr Columbus, OH 43228	www.centralpower.com	(800) 444-7774
Magneto Power LLC	1000 W. Donges Bay Rd Suite 100 Mequon, WI 53092	www.magnetopower.com	(800) 733-7388
Sedco, Inc	225 Henry D. Robinson Blvd Pendergrass, GA 30567	www.sedcoinc.com	(800) 346-4260
Power Source Canada, LTD	2815 Bristol Circle, Unit 1 Oakville, ON L6H 6X5	www.powersourcecanada.ca	(905) 829-0006

Hardware Identification & Torque Specifications

Torque Specification Chart								
FOR STANDARD METRIC MACHINE HARDWARE (Tolerance ± 20%)								
Property Class	5.6		8.8		10.9		12.9	
	Class 5.6		Class 8.8		Class 10.9		Class 12.9	
Size Of Hardware	in/lbs		in/lbs		in/lbs		in/lbs	
	ft/lbs	Nm.	ft/lbs	Nm.	ft/lbs	Nm.	ft/lbs	Nm.
M3	5.88	.56	13.44	1.28	19.2	1.80	22.92	2.15
M4	13.44	1.28	30.72	2.90	43.44	4.10	52.56	4.95
M5	26.4	2.50	60.96	5.75	5.97	8.10	7.15	9.7
M6	44.64	4.3	7.3	9.9	10.3	14	12.1	16.5
M7	5.2	7.1	12.1	16.5	16.9	23	19.9	27
M8	7.7	10.5	17.7	24	25	34	29	40
M10	15	21	35	48	50	67	59	81
M12	26	36	61	83	86.2	117	103	140
M14	42	58	101	132	136	185	162	220
M16	64	88	147	200	210	285	250	340
M18	89	121	202	275	287	390	346	470
M20	126	171	290	390	405	550	486	660
M22	169	230	390	530	559	745	656	890
M24	217	295	497	375	708	960	840	1140
M27	320	435	733	995	1032	1400	1239	1680
M30	435	590	995	1350	1401	1900	1681	2280
M33	590	800	1349	1830	1902	2580	2278	3090
M36	759	1030	1740	2360	2441	3310	2935	3980
M39	988	1340	2249	3050	3163	4290	3798	5150

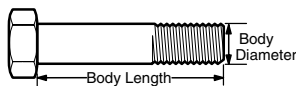
The guides and ruler furnished below are designed to help you select the appropriate hardware.



Nut, M8

Thread Diameter (mm)
Inside Diameter (in)
Threads per inch

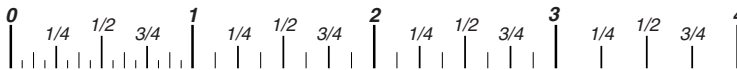
Nut, 1/2-16



Screw, M8- 1.25 x 25

Thread Diameter (mm)
Body Diameter
Distance between threads (mm)
Threads per inch
Body Length (mm)
Body Length (in)

Screw, 1/2- 16 x 2



Standard Hardware Sizing

When a washer or nut is identified as **1/2"** (M8), this is the *Nominal size*, meaning the *inside diameter* is 1/2 inch (8mm metric thread diameter); if a second number is present it represents the *threads per inch* (distance between threads).

When bolt or capscrew is identified as **1/2 - 16 x 2"** (M8 - 1.25 x 50), this means the *Nominal size*, or body diameter is 1/2 inch (8mm metric thread diameter), the second number, 16, represents the *threads per inch*, (1.25 thread diameter). The final number is the body length of the bolt or screw, 2 inches (50mm).

Torque Specification Chart						
FOR STANDARD MACHINE HARDWARE (Tolerance ± 20%)						
Hardware Grade	No Marks		No Marks		No Marks	
	SAE Grade 2		SAE Grade 5		SAE Grade 8	
Size Of Hardware	in/lbs		in/lbs		in/lbs	
	ft/lbs	Nm.	ft/lbs	Nm.	ft/lbs	Nm.
8-32	19	2.1	30	3.4	41	4.6
8-36	20	2.3	31	3.5	43	4.9
10-24	27	3.1	43	4.9	60	6.8
10-32	31	3.5	49	5.5	68	7.7
1/4-20	66	7.6	8	10.9	12	16.3
1/4-28	76	8.6	10	13.6	14	19.0
5/16-18	11	15.0	17	23.1	25	34.0
5/16-24	12	16.3	19	25.8	29	34.0
3/8-16	20	27.2	30	40.8	45	61.2
3/8-24	23	31.3	35	47.6	50	68.0
7/16-14	30	40.8	50	68.0	70	95.2
7/16-20	35	47.6	55	74.8	80	108.8
1/2-13	50	68.0	75	102.0	110	149.6
1/2-20	55	74.8	90	122.4	120	163.2
9/16-12	65	88.4	110	149.6	150	204.0
9/16-18	75	102.0	120	163.2	170	231.2
5/8-11	90	122.4	150	204.0	220	299.2
5/8-18	100	136	180	244.8	240	326.4
3/4-10	160	217.6	260	353.6	386	525.0
3/4-16	180	244.8	300	408.0	420	571.2
7/8-9	140	190.4	400	544.0	600	816.0
7/8-14	155	210.8	440	598.4	660	897.6
1-8	220	299.2	580	788.8	900	1,244.0
1-12	240	326.4	640	870.4	1,000	1,360.0

NOTES

- These torque values are to be used for all hardware excluding: locknuts, self-tapping screws, thread forming screws, sheet metal screws and socket head setscrews.
- Recommended seating torque values for locknuts:
 - for prevailing torque locknuts - use 65% of grade 5 torques.
 - for flange whizlock nuts and screws - use 135% of grade 5 torques.
- Unless otherwise noted on assembly drawings, all torque values must meet this specification.

Common Hardware Types

Hex Head Capscrew



Washer



Lockwasher

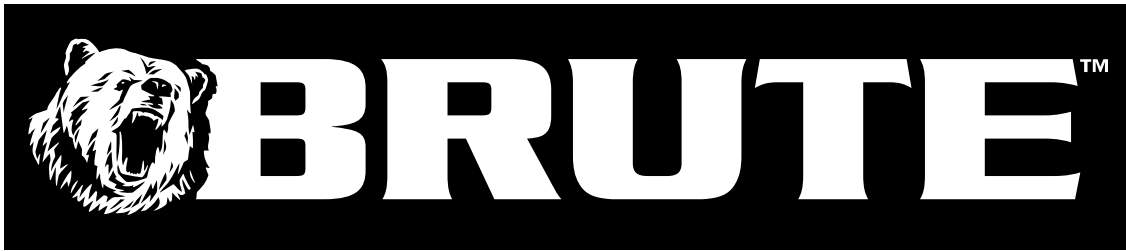
Carriage Bolt



Hex Nut

Wrench & Fastener Size Guide

1/4" Bolt or Nut Wrench—7/16"	5/16" Bolt or Nut Wrench—1/2"	3/8" Bolt or Nut Wrench—9/16"	7/16" Bolt or Nut Wrench (Bolt)—5/8" Wrench (Nut)—11/16"	1/2" Bolt or Nut Wrench—3/4"
M6 Bolt or Nut Wrench—10mm	M8 Bolt or Nut Wrench—13mm	M10 Bolt or Nut Wrench—17mm	M12 Bolt or Nut Wrench—19mm	M14 Bolt or Nut Wrench—22mm



**IT IS THE POLICY OF BRIGGS & STRATTON CORP. TO IMPROVE ITS PRODUCTS
WHENEVER IT IS POSSIBLE AND PRACTICAL TO DO SO. WE RESERVE THE RIGHT TO
MAKE CHANGES OR ADD IMPROVEMENTS AT ANY TIME WITHOUT INCURRING ANY
OBLIGATION TO MAKE SUCH CHANGES ON PRODUCTS.**

BRUTE™ is a trademark of Briggs & Stratton Yard Power Products.

Copyright© 2008 Briggs & Stratton Power Products Group. All rights reserved. No part of this page can be reproduced or transmitted in any form by any means without the express written permission of Briggs & Stratton Power Products Group.

Briggs & Stratton Yard Power Products Group

3515 N. 124 Street / PO Box 702
Wauwatosa, WI 53222 USA

www.brutepower.com

© Copyright 2010 by Briggs & Stratton Corporation
Milwaukee, WI, USA. All rights reserved